

A man with short brown hair and glasses, wearing a dark hoodie, is shown in profile. He is holding a handheld electronic device in his left hand and a long, thin probe in his right hand, which is touching a dark, industrial machine. The background is a dimly lit factory with various metal structures and lights.

Introducing Nor-Fab

Where craft meets technology

NOR-FAB
MANUFACTURING 

- SOLIDWORKS™ 3D Modeling for process refinement and concept development
- State of the art 4k watt laser
- Powder Coating system designed to maximize corrosion resistance
- Advanced technology laser measuring equipment
- Precision sheet metal fabrication



About Us

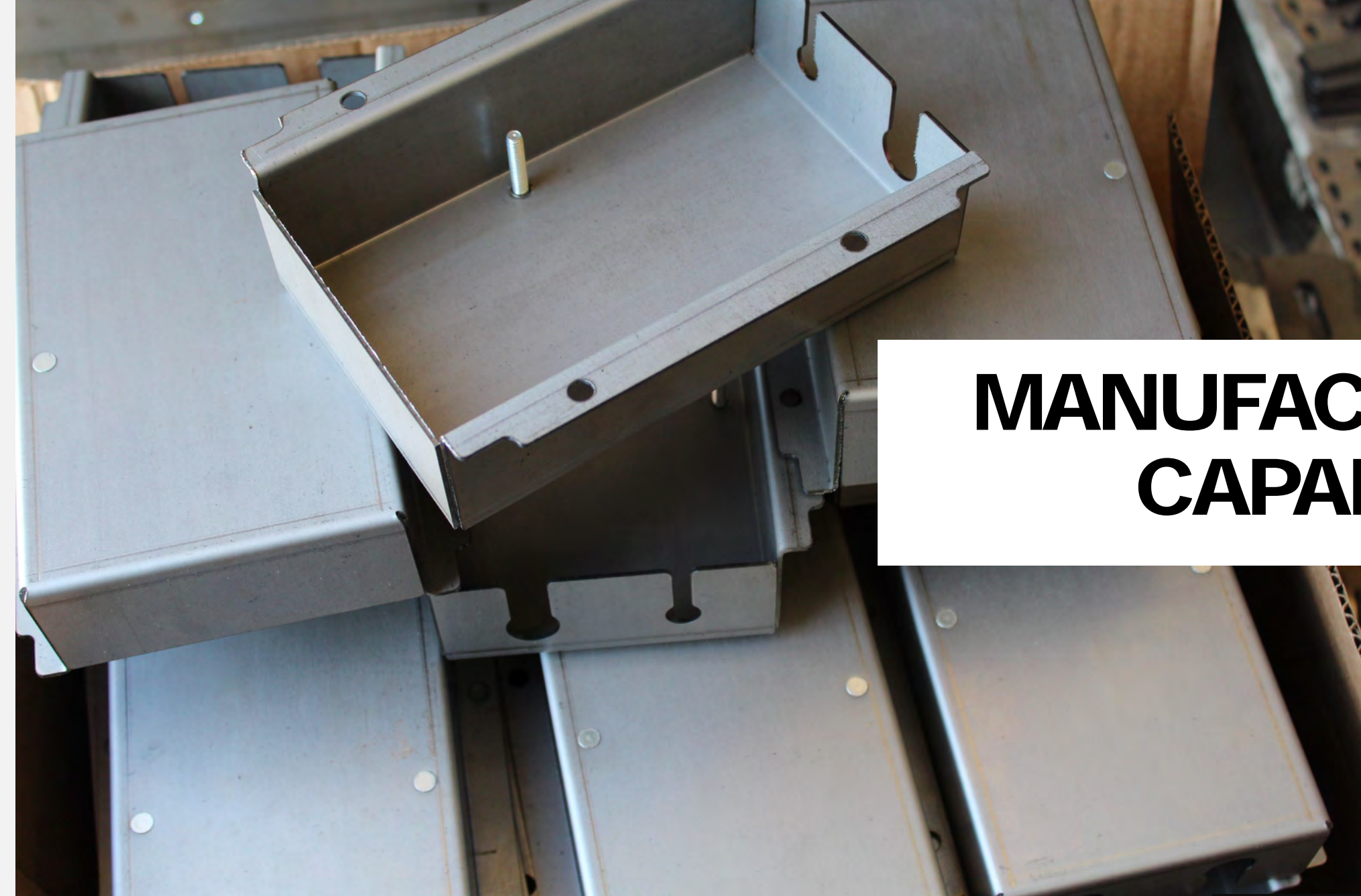
Since 1994 Nor-Fab Manufacturing has been providing high quality sheet metal, machine products, and services for a wide variety of industries.

The background of the slide is a photograph of an industrial facility. Numerous vertical metal frames, likely for testing or assembly, are suspended from a ceiling system of cables and pulleys. The frames are dark-colored with circular cutouts. The floor is concrete, and some industrial equipment is visible in the background.

Core Competencies

We are proud to be ISO Certified 9001:2015

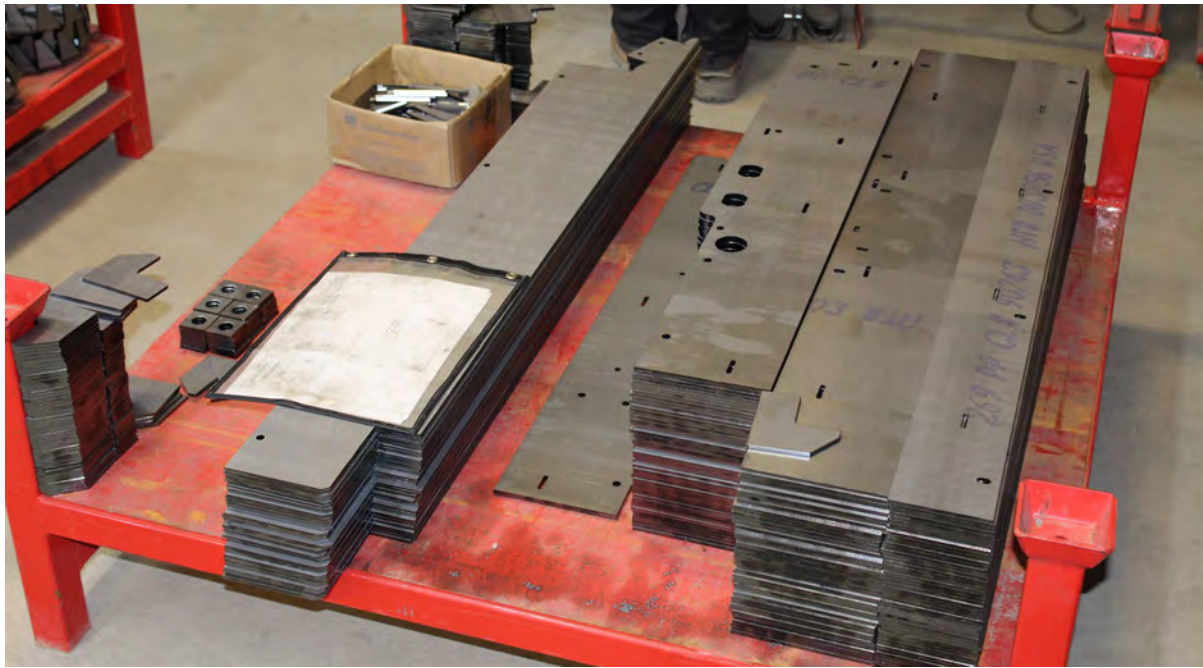
- Sheet Metal Enclosures
- Welding
- Powder Coating
- Turn-Key Product Delivery with Assembly
- Competitive Pricing
- On Time Delivery



MANUFACTURING CAPABILITIES

Laser Cutting

- 5' x 10' Sheet Size, 1" Steel, 5/16" Stainless, 1/8" Aluminum



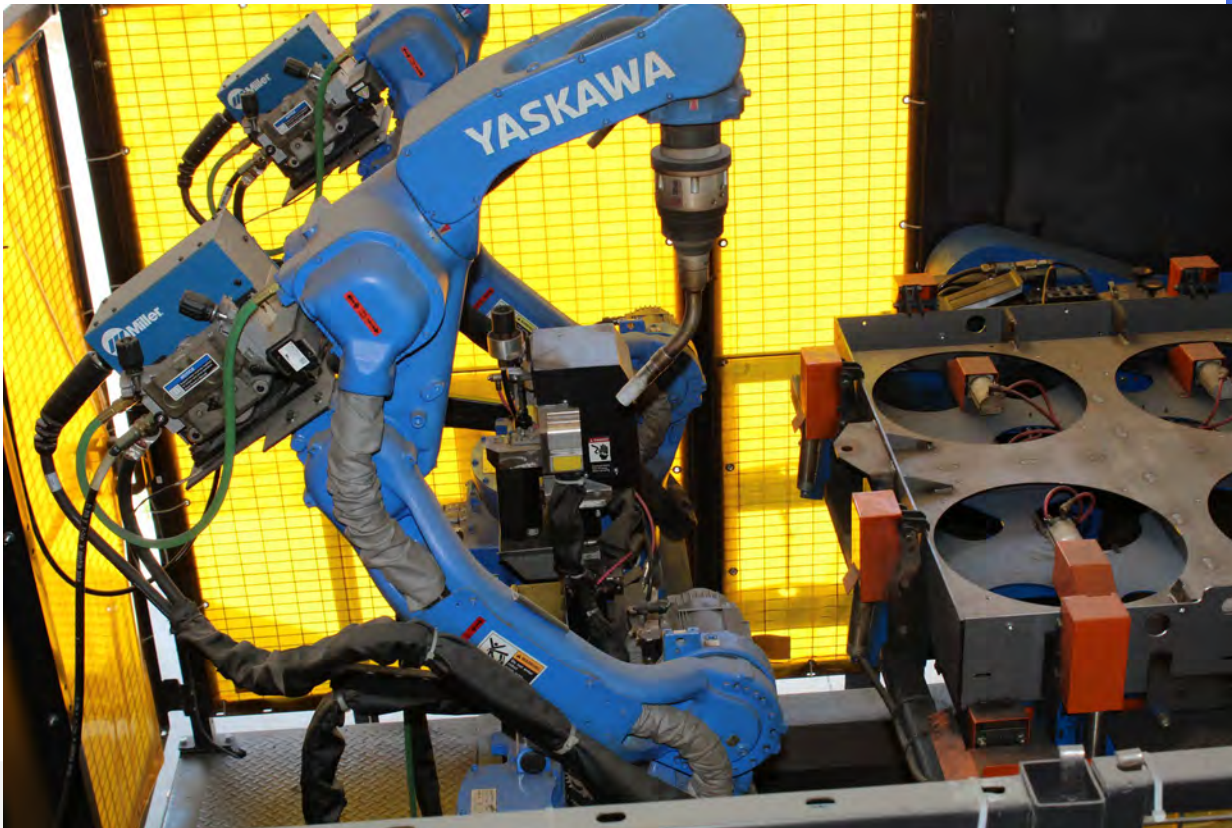
Press Brake Bending

- Up to 13' Long x 250 tons and tooling for many complex bends, including hemming



Welding

- MIG, TIG, Spot
- AWS and MILSPEC



Sawing and Finishing

- Up to 10" Round
- Up to 8" x 10" Rectangle



- UL and NSF Standards
- #4 Grain Finishing for Stainless

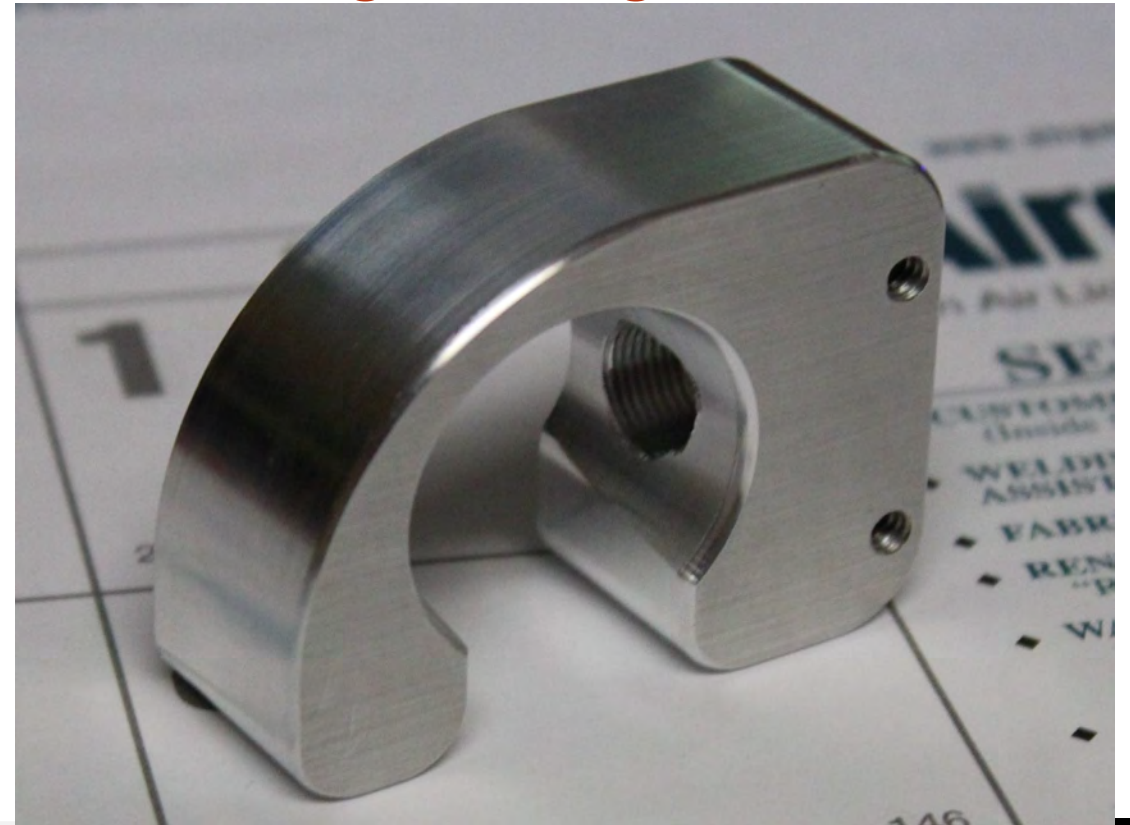


CNC Turning and Milling

- 20" Chuck work
- 10"x20" Between Centers
- Up to 3" Bar Capacity
- Live Tooling and Sub Spindle Machines
- CAM Programming Software

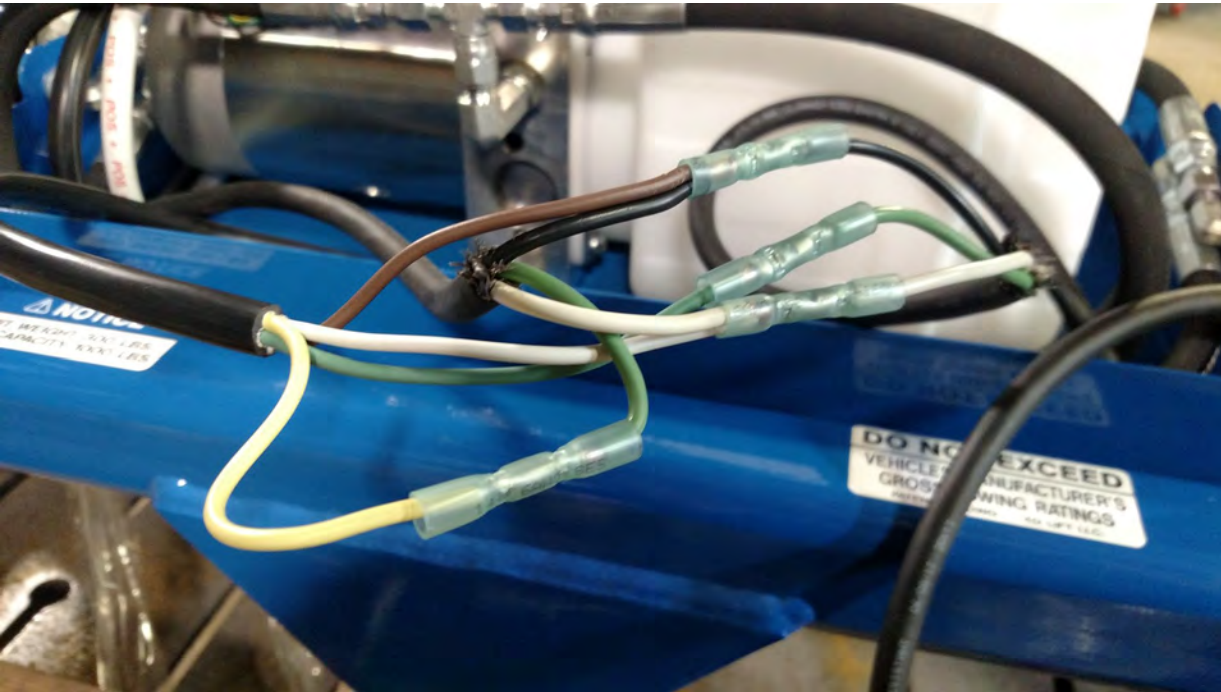


- Up to 44"x20"x20" Envelope
- Rotary Axis Work
- CAM Programming Software



Assembly

- Large and Small Machines
- Components
- Enclosures



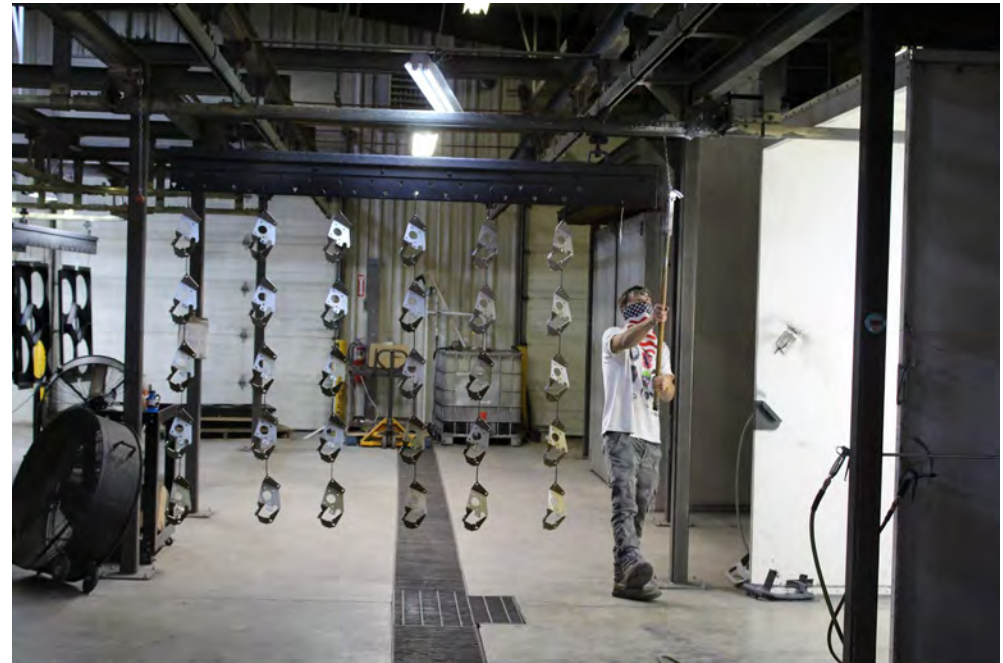
- Hardware Insertion

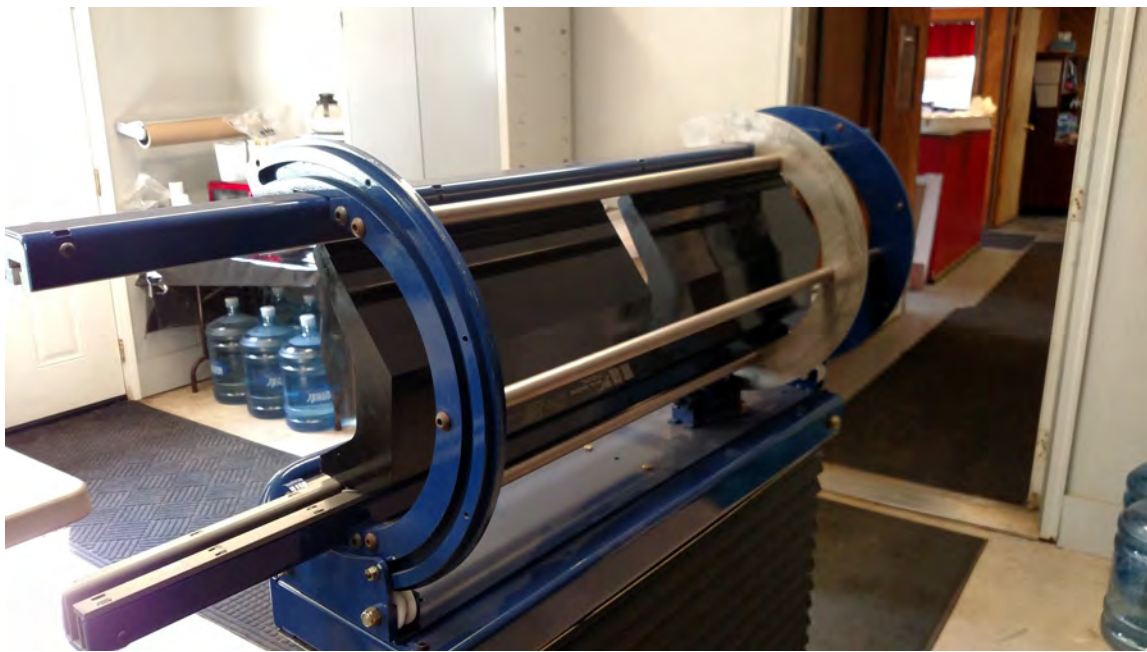


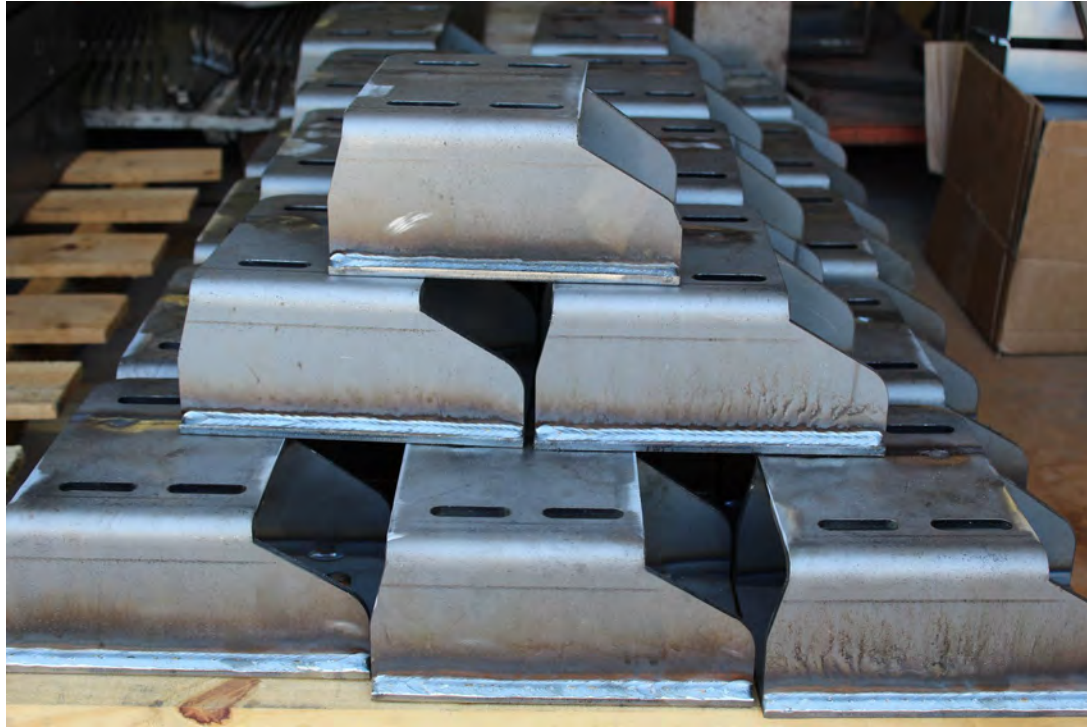
Powder Coating

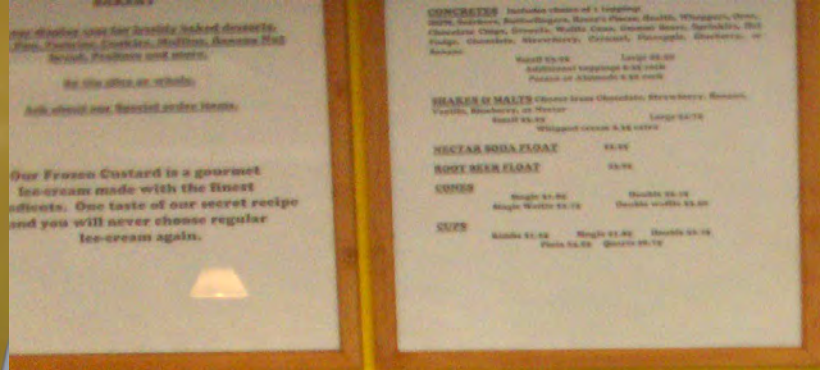
- Up to 5'x5'x10' Parts
- Multiple Step Pre-Treatment Process
- System Designed to maximize corrosion resistance











Major Customers

CATERPILLAR®



Genie®
TEREX BRAND

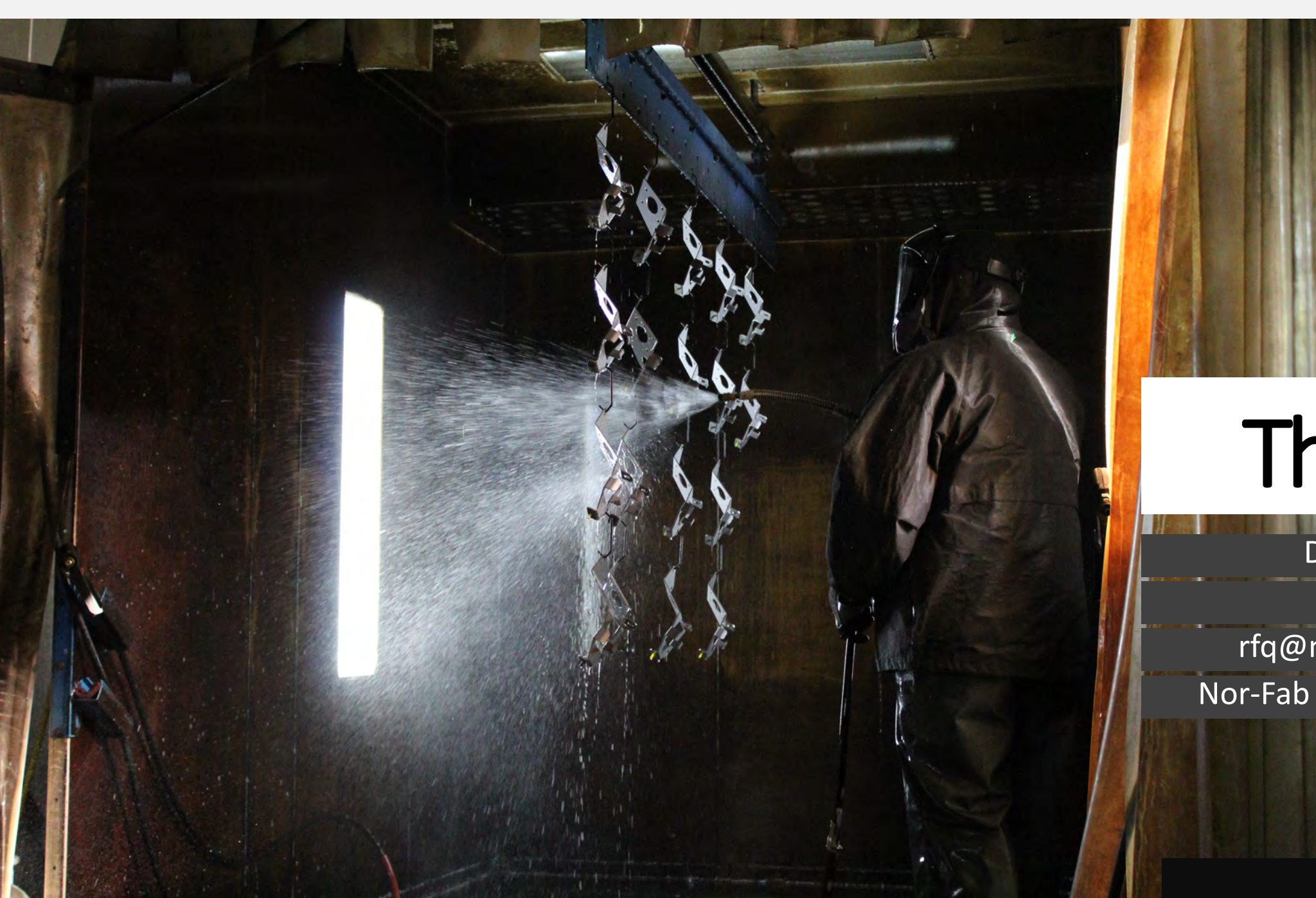


SYMMETRY
ELECTRONICS INC.



JEFF GEPNER
EVENT EQUIPMENT

SPARTACO



Thank You

Dannielle Zuern



906-428-5627



rfq@norfabmfg.com



Nor-Fab Manufacturing

